

## GEOTECHNICAL CHARACTERISTICS OF BOTTOM SEDIMENT IN THE NORTHEASTERN BERING SEA<sup>1</sup>

HAROLD W. OLSEN<sup>2</sup>, EDWARD C. CLUKEY<sup>3</sup> & C. HANS NELSON<sup>3</sup>

### ABSTRACT

Olsen, H.W., E.C. Clukey & C.H. Nelson 1982 Geotechnical characteristics of bottom sediment in the northeastern Bering Sea. In: C.H. Nelson & S.D. Nio (eds.): The northeastern Bering shelf: new perspectives of epicontinental shelf processes and depositional products – Geol. Mijnbouw 61: 091-103.

Sediment of Holocene age derived from the Yukon River, consisting dominantly of silty fine sand and sandy silt, covers the bottom of central and western Norton Sound, which is a high energy environment involving extensive ice loading, high waves, and strong bottom currents. The sediment contains significant amounts of sand in some areas and a generally minor amount of clay-size material ranging from 0 to 20 percent. Moreover, the sediment is generally dense, although loose and weak zones occur at the surface and also at depth between relatively dense layers. These characteristics, evidence of storm sand layers and scour depressions, and the results of preliminary analytical studies indicate that this sediment is susceptible to liquefaction during major storms.

Substantially finer grained, weak, and highly compressible sediment of Holocene age, derived from the Yukon River and from local rivers and streams, covers eastern Norton Sound and the Port Clarence embayment, which are low energy environments with negligible ice loading, low waves, and weak bottom currents.

Transgressive deposits of late Pleistocene age that cover the bottom of Chirikov Basin include an inner-shelf fine sand underlain by a basal transgressive medium sand that is exposed on the north and east flanks of the basin. Geotechnical data in the latter, obtained in the sand waves fields near Port Clarence, show that the material is loose near the surface but becomes firm rapidly with depth and could not be penetrated more than about 3 m with the Alpine vibratory corer.

Pleistocene peaty deposits underlie the Holocene and late Pleistocene deposits in both Norton Sound and Chirikov Basin and are somewhat overconsolidated, probably because of subaerial desiccation during low sea level stands in the late Pleistocene. These materials have a higher clay content than the overlying deposits and they contain substantial amounts of organic carbon and gas. The presence of gas suggests that in situ pore pressure may be high. If so, the strength of the material could be low even though the material is generally overconsolidated.

### INTRODUCTION

During the last few years the U.S. Geological Survey (USGS) has been acquiring geotechnical data on bottom sediment in the northeastern Bering Sea. This effort has been part of a broad group of USGS studies in this regio aimed at clarifying and evaluating those geologic conditions and processes that may be hazardous to offshore resource development activities

(THOR & NELSON, 1979; LARSEN ET AL., 1981).

Previous reports concerning this geotechnical effort include the papers by CLUKEY ET AL. (1978), NELSON ET AL. (1978; 1979), and SANGREY ET AL. (1979). These reports describe nearsurface data on samples obtained during 1976 and 1977 with box corers, Satour-Van Veen samplers, and a Kiel vibracorer capable of penetrating 2 m beneath the ocean floor<sup>4</sup>. The data also include penetration rate measurements during vibracoring operations. During 1978, additional samples and penetration records were obtained with an Alpine vibratory corer system equipped to obtain 8.89 cm diameter continuous samples to a maximum depth of 6 m. All of the data obtained to date have been compiled for the Bureau of Land Management in a USGS open-file report by LARSEN ET AL. (1980).

The purpose of this paper is to summarize the geotechnical

<sup>1</sup> Manuscript received: 1981-10-21.

Manuscript accepted: 1982-01-08.

<sup>2</sup> U.S. Geological Survey, Box 25046, Mail Stop 903, Denver, Colorado 80225, U.S.A.

<sup>3</sup> U.S. Geological Survey, 345 Middlefield Road, Menlo Park, California 94025, U.S.A.

<sup>4</sup> Use of brand names in this report is for descriptive purposes only and does not constitute endorsement by the U.S. Geological Survey.

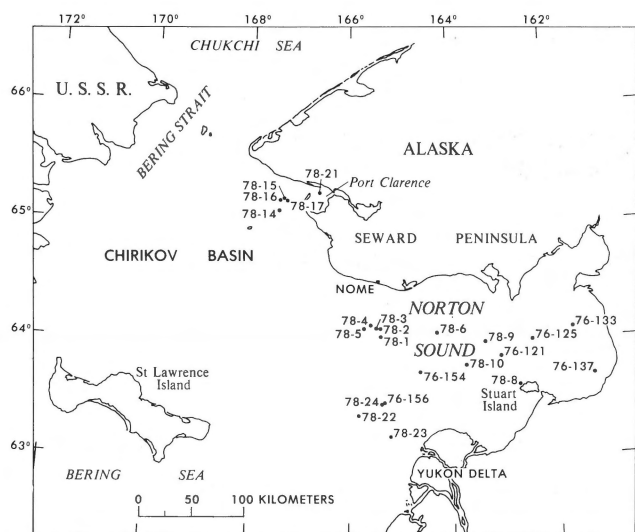


Fig. 1  
Location map of northern Bering Sea showing regions and sampling stations cited in this paper.

information obtained in the above studies in relation to the geologic and environmental conditions in the northeastern Bering Sea and to assess the implications of these data with regard to potential hazards to offshore resource development activities in the region.

## GEOLOGIC AND ENVIRONMENTAL FRAMEWORK

The bottom of Norton Sound consists of silty fine sand and sandy silt of Holocene age discharged from the Yukon River, except for nearshore areas where Pleistocene (>10,000 years B.P.; HOPKINS, 1975) transgressive deposits remain and tidally scoured throughs where transgressive and Holocene deposits are mixed (Fig. 1; NELSON, 1982, this volume, Figure 6). In southern Norton Sound, the Holocene sediment is interbedded with fine sand layers as much as 20 cm thick near the Yukon Delta; Pleistocene freshwater silt interbedded with peaty muds and peat layers underlies the Holocene sediment.

Most of Chirikov Basin is covered by an inner shelf fine sand deposited by the late Pleistocene shoreline transgression across this region (Fig. 1; NELSON, 1982, this volume, figure 6). This deposit is underlain by a basal transgressive medium sand that is exposed on the north and east flanks of the basin. Lag gravels are exposed near the basin margins where the late Pleistocene shoreline transgression has reworked pre-Quaternary bedrock and glacial moraines and where strong modern currents have prevented subsequent deposition. Strong bottom currents and water circulation patterns have inhibited deposition of Holocene sediment from the Yukon River throughout Chirikov Basin, except for some accumulations with ice-rafted pebbles in local depressions in eastern and southern Chirikov Basin (MCMANUS ET AL., 1977).

Prior to the deposition of the transgressive sand layers,

tundra-derived peat deposits formed during several Pleistocene low sea level stands that periodically exposed the entire northern Bering shelf until 12,000-13,000 years ago. These Pleistocene limnic peaty muds generally overlie Pleistocene glacial and alluvial deposits that are underlain by pre-Quaternary bedrock.

The Pleistocene peaty mud is a source of biogenic gas throughout the region. Seismic profiles showing acoustic anomalies associated with these materials indicate gas concentrations are of sufficient magnitude to affect sound transmission throughout Norton Sound (HOLMES & THOR, 1982, this volume). The presence of shallow craters in the thin Holocene sediment in east-central Norton Sound suggests venting of biogenic gas accumulations from the underlying peaty muds (NELSON ET AL., 1979). Generally low background levels of dissolved hydrocarbons in the waters of Norton Sound and high gas contents in the underlying peaty mud suggest venting is episodic, while the Holocene sediment generally acts as a seal preventing the biogenic gas from diffusing freely to the sea floor as it appears to do through the transgressive sand in Chirikov Basin (NELSON ET AL., 1979).

A large submarine seepage of thermogenic gas in west-central Norton Sound was discovered in 1976 (CLINE & HOLMES, 1977; NELSON ET AL., 1978; KVENVOLDEN ET AL., 1979b). Acoustic investigations indicate the presence of bubble-phase gas associated with the sediment in the seep in an area of 50 km<sup>2</sup> (NELSON ET AL., 1978). Detailed geophysical and geochemical studies indicate that hydrocarbons and CO<sub>2</sub> are migrating upward along a major growth fault in the sedimentary section (KVENVOLDEN ET AL., 1979a).

Bottom sediment in the northeastern Bering Sea is exposed to ice loading cyclic stress from waves, and drag from bottom currents (Table 1). Ice loading is extensive in the vicinity of the Yukon Delta (THOR & NELSON, 1979; THOR ET AL., 1981). High waves and strong bottom currents occur in central and western Norton Sound and in Chirikov Basin. Storm waves and bottom currents cause significant reworking and erosion of the sediment in Norton Sound (LARSEN ET AL., 1979) and also cause the transport of sediment from Norton Sound to the Chukchi Sea, almost 1000 km to the northwest (CACCHIONE ET AL., 1982, this volume; DUPRÉ & THOMPSON, 1979; NELSON & CREAGER, 1977; DRAKE ET AL., 1980). Two areas in this study, Port Clarence and eastern Norton Sound, are protected from large waves and strong bottom currents.

## GEOTECHNICAL PROFILES

### Methods

The geotechnical profiles (Figs. 2-6) present, for each of the regions outlined in Table 1, information concerning the composition and the relative density or consolidation state of the materials. Direct evidence concerning the composition of the materials includes the data on lithology, texture, Atter-

Table 1  
Geologic and environmental framework for geotechnical studies in the northeastern Bering Sea

Region	Geologic units	Origin	Gas	Environmental loading		
				Waves	Bottom currents	Ice
Yukon Prodelta	Holocene silty fine sand and sandy silt with interbedded storm sand layers less than 20 m thick.	Yukon River. High energy deposition and redeposition.	Biogenic	High	Strong	Extensive
West-central Norton Sound	Holocene silty fine sand and sandy silt, bioturbated, 1-2 m thick, over.	Yukon River. Medium energy deposition.	Thermogenic and biogenic	Medium to strong	Medium to strong	Low
	Pleistocene freshwater peaty mud.	Freshwater deposition: tundra-derived peat; subaerial desiccation.				
East-central Norton Sound	Holocene silty fine sand and sandy silt, bioturbated, 1-2 m thick, over	Yukon River. Medium energy deposition.	Biogenic	Medium	Medium	Low
	Pleistocene freshwater peaty mud.	Freshwater deposition: tundra-derived peat; subaerial desiccation.				
Eastern Norton Sound and Port Clarence Embayment.	Holocene sandy clayey silt, over	Yukon River and streams discharging from nearby shorelines. Low energy. deposition.	Biogenic	Low	Low	Low
	Pleistocene freshwater peaty mud and (or) glacial till.	Origin of Pleistocene peaty mud; same as above,				
Sand wave fields near Port Clarence in Chirikov Basin.	Late Pleistocene transgressive sands, over	Sand derived from pre-Quaternary bedrock and glacial moraines.	Biogenic	High	Very Strong	Low
	Pleistocene freshwater peaty mud/or glacial till.	Origin of Pleistocene peaty mud, same as above.				

berg limits, and gas content. The other data on moisture content, density, strength indices, and vibracore penetration resistance reflect the combined influences of the composition and the relative density or consolidation state. The latter can usually be inferred on a qualitative basis from the suites of information presented.

The data in figures 2-6 were obtained with shipboard and laboratory procedures as follows: penetration rates were derived from vibratory corer penetration rates during sampling; gas content data were obtained on shipboard from 10- to 15-cm sample tube sections using the procedures described by KVENVOLDEN ET AL. (1979a); bulk densities of tube sections were calculated from shipboard measurements of their vol-

ume and weight; visual descriptions, shear strength index measurements, and subsamples for moisture content, density, Atterberg limits, and texture analyses were obtained on shipboard from split tube sections of all cores except 78-1 through 78-5. The latter cores were preserved on shipboard and were subsequently extruded, logged, and tested in the USGS geotechnical laboratory in Denver. The Holocene-Pleistocene boundaries noted on figures 2-6 were derived from lithologic logging and radiocarbon dates (NELSON, 1982, this volume), and from microfaunal analyses (MCDUGALL, 1982, this volume). Texture analyses were run with geologic (LARSEN ET AL., 1980), and engineering standard (AMERICAN SOCIETY FOR TESTING AND MATERIALS, 1977) sieving and

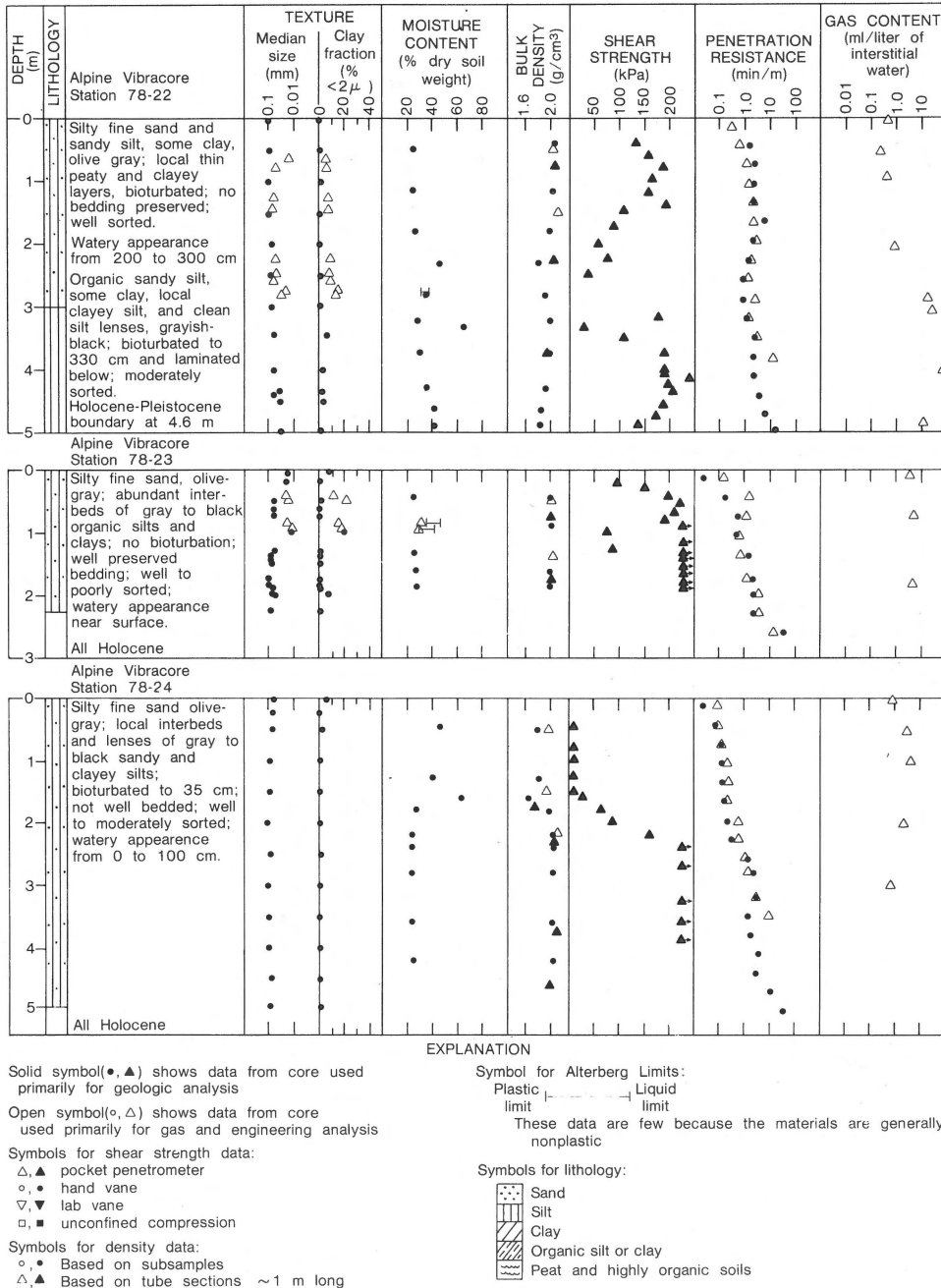


Fig. 2  
Geotechnical profiles from the Yukon Prodelta.

sedimentation column techniques. Moisture content and density data were obtained on subsamples taken with the miniature coring device described by CLUKEY ET AL. (1978). Atterberg limits were run in accordance with ASTM Standards using the wet preparation method, D 2217 (AMERICAN SOCIETY FOR TESTING AND MATERIALS, (1977). Strength index data were obtained with laboratory vane, hand vane, pocket penetrometer, and unconfined compression test equipment. Circumstances did not generally allow these measurements to be made under controlled conditions with standardized

procedures that must be employed for the data to have quantitative significance regarding shear strengths. Nevertheless, these data show differences in strength that reflect variations in the composition and the relative density or consolidation states of the materials tested. The absence of strength index data in some of the profiles is also significant in that materials, such as clean sands that do not possess any apparent cohesion, cannot be tested with the strength index test methods used in this study.

*Yukon Prodelta*

The three profiles in the vicinity of the Yukon Delta (Fig. 2) show mostly Holocene materials that are dominantly silty fine sand, and sandy silt with occasional thin beds of organic clayey silt having clay contents generally less than 20 percent. Gas contents vary over a wide range at station 78-22 from about 0.2 to 70 ml/l of interstitial water; the range at stations 78-23 and 78-24 is considerably less, from about 0.8 to 4.0 ml/l. The relative density of the material varies over a wide range. Moderately dense to dense zones predominate. However, loose zones, indicated by a watery appearance and very low strengths, are particularly evident at a depth of 2-3 m at station 78-22, and from the surface to a depth of about 1.5 m at station 78-24. The watery appearance of the loose zones emerged fairly rapidly after the core was split, apparently because the material densified in response to vibrations generated by the ship engines. The variations of penetration

resistance with depth generally correlate with the presence of loose or dense zones. The variations in gas content with depth do not show a close association either with relative density as inferred above or with the variations in texture, density, and strength with depth.

*West-central Norton Sound*

The five profiles in west-central Norton Sound (Fig. 3) are located in the thermogenic (KVENVOLDEN ET AL., 1979a) gas seep acoustic anomaly (stations 78-1, 78-2, and 78-3), within a nearby biogenic (KVENVOLDEN ET AL., 1979a) gas acoustic anomaly (station 78-4), and adjacent to the biogenic gas acoustic anomaly (station 78-5). Very high gas contents occur at one location in the thermogenic anomaly (station 78-3) and in the biogenic anomaly (station 78-4). Much lower gas contents occur at stations 78-1 and 78-2 in the thermogenic anomaly and at station 78-5 adjacent to the biogenic anomaly.

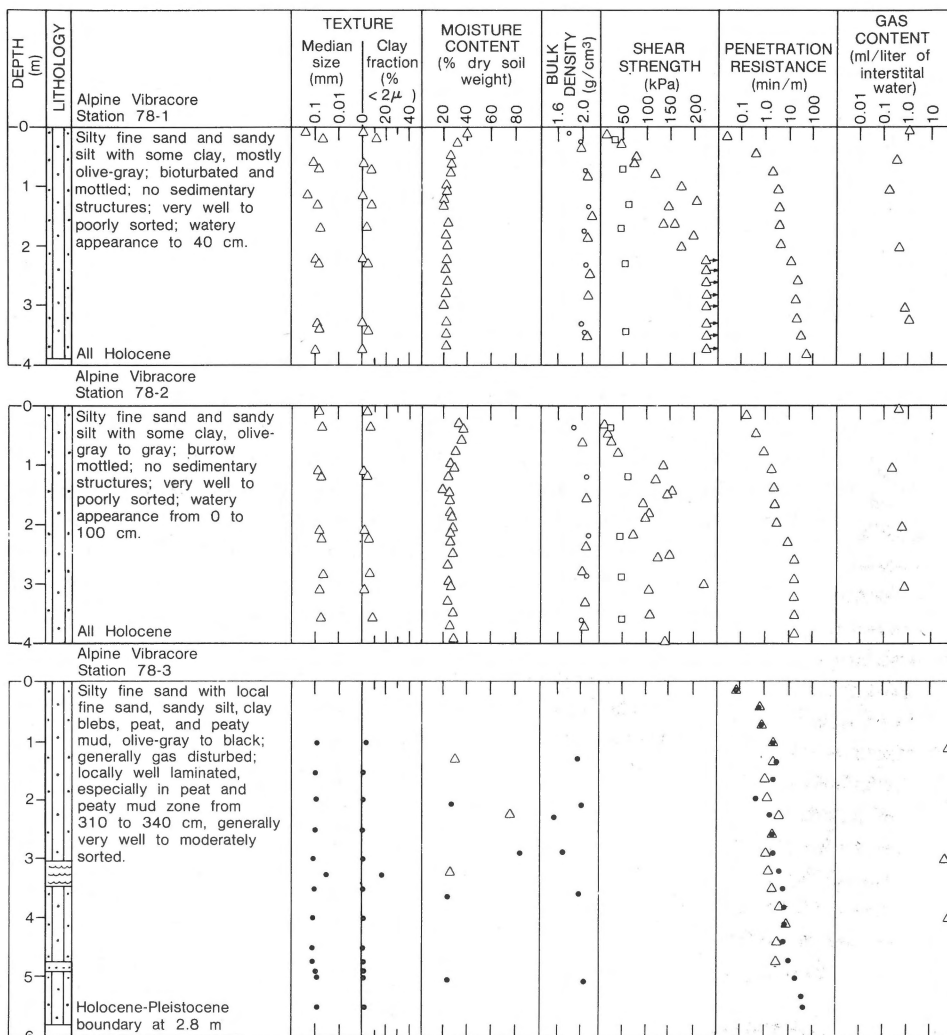
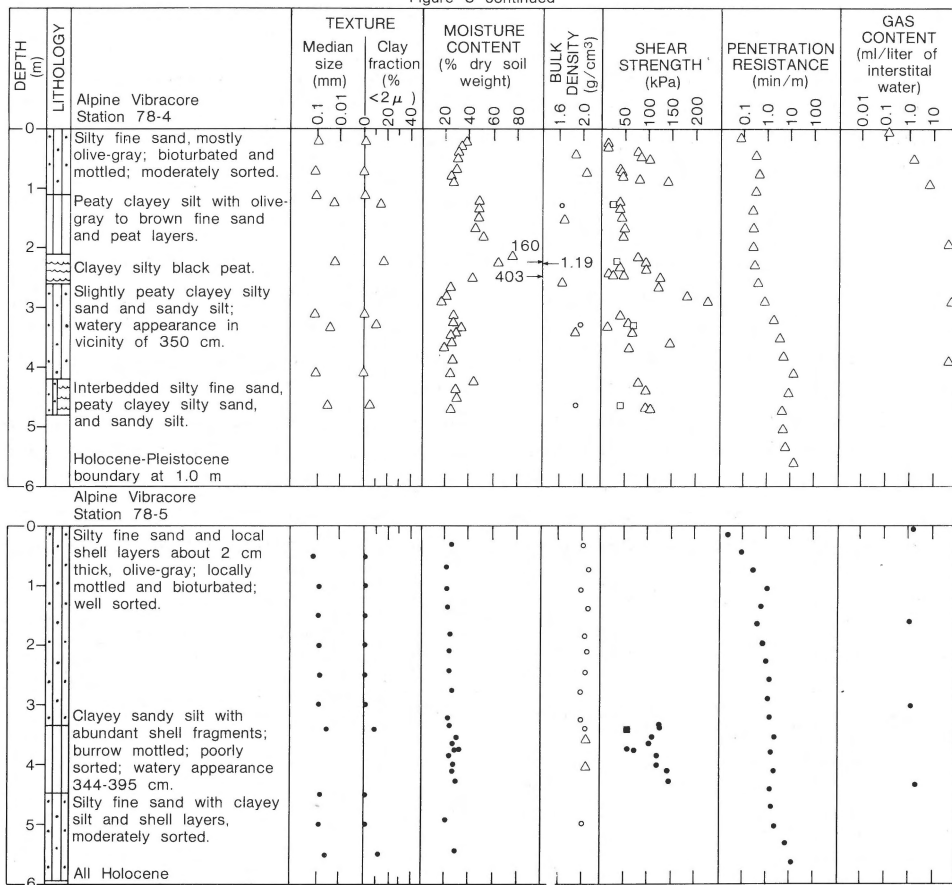


Figure 3 continued on following page

Fig. 3

Geotechnical profiles from west-central Norton Sound. Stations 78-1, 78-2, and 78-3 are in the thermogenic gas seep acoustic anomaly south of Nome. Station 78-4 is on a nearby biogenic gas acoustic anomaly. Station 78-5 is adjacent to the biogenic gas acoustic anomaly.

Figure 3 continued



See explanation on fig. 2

These profiles penetrate silty fine sand and sandy silt that are similar to the materials in the Yukon Delta region (Fig. 2) and that are probably Holocene deposits because of their lithology, texture, and consistently low moisture contents. The two profiles with high gas contents also penetrate Pleistocene peaty muds at depth of about 3 m and 1 m at stations 78-3 and 78-4, respectively. Note that the high water contents and low densities are clearly associated with the peaty muds. The relative density of the materials varies over a wide range, which is similar to the range observed in the Yukon Delta region (Fig. 2) as indicated by watery-appearing zones and the wide variations in strength. The vibracore penetration resistance appears to correlate in general with the strength data, although not below 3 m depth at station 78-4. Low penetration resistance is associated with very high gas contents in the profile at station 79-3 and above 3 m in the profile at station 78-4. However, the increase in penetration resistance below 3 m at station 78-4, and the low penetration resistance at station 78-5 are not associated with changes in, or high values of, gas contents, respectively.

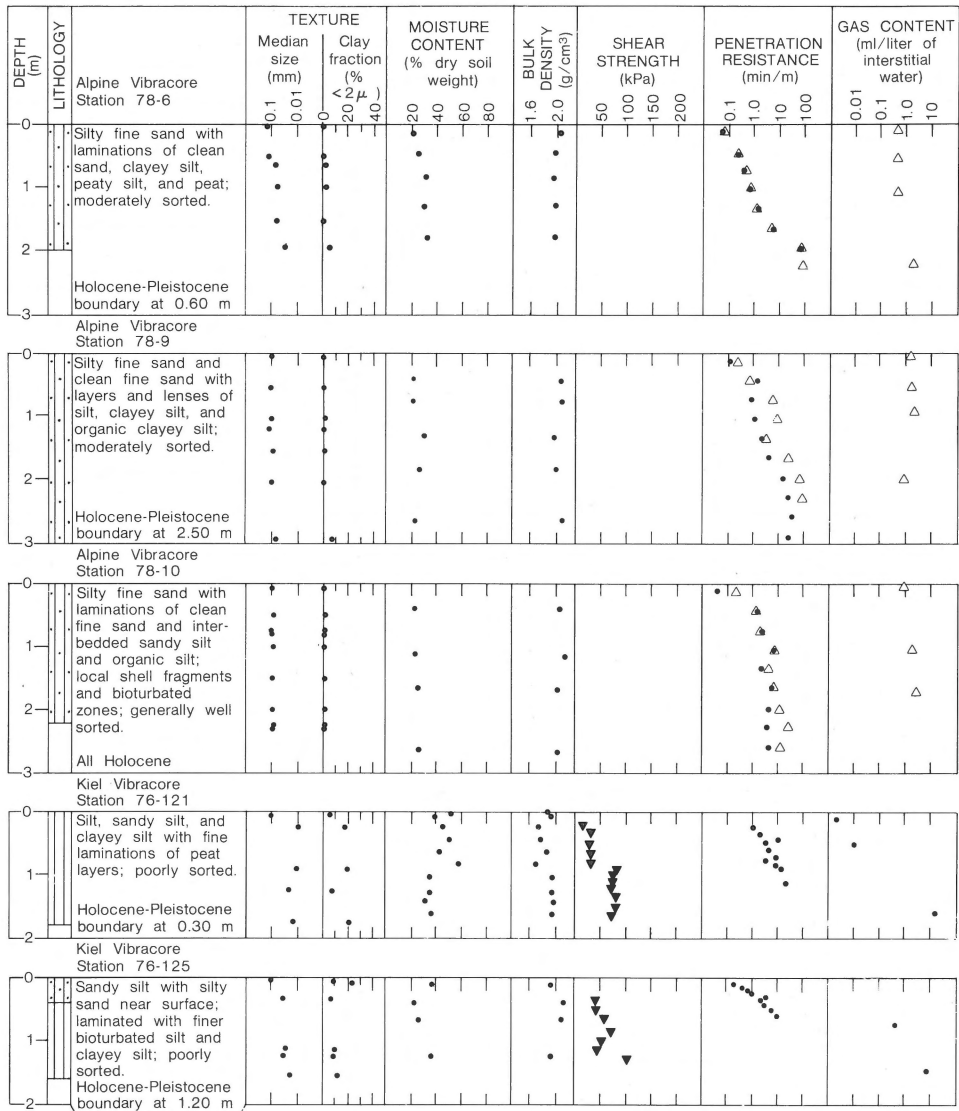
*East-central Norton Sound*

In east-central Norton Sound (Fig. 4) four of the five profiles (stations 78-6, 78-9, 76-121, 76-125) penetrate thin deposits of

Holocene silty fine sand and sandy silt and extend into the underlying Pleistocene deposits which include freshwater peaty mud. The profile at station 78-10 appears to penetrate only The Holocene material. Compared with the west-central Norton Sound and Yukon Delta regions (Figs. 2 and 3), these profiles show similar materials with relative densities that are low near the surface, but that increase much more rapidly with depth. In fact, the Alpine vibratory corer was unable to penetrate deeper than about 3 m in this region. The rapid increase in penetration resistance with depth occurs in both Holocene and Pleistocene materials, even through their gas contents are similar to those in weaker materials at other locations such as in the station 78-5 profile in west-central Norton Sound (Fig. 3).

*Eastern Norton Sound and the Port Clarence embayment*

The profiles from eastern Norton Sound, near Stuart Island, and from the Port Clarence embayment (Fig. 5) penetrate materials that are generally finer grained and have relatively high moisture contents, high plasticity, low density, low strength, and low penetration resistance compared with the materials in the region previously discussed. The characteristics of these profiles (Fig. 5) appear to be associated with their low energy environments. Station 78-21 is located in Port



See explanation on fig. 2

Fig. 4

Geotechnical profiles from east-central Norton Sound where shallow gas craters are associated with thin deposits of Holocene Yukon silt overlying Pleistocene freshwater peaty mud.

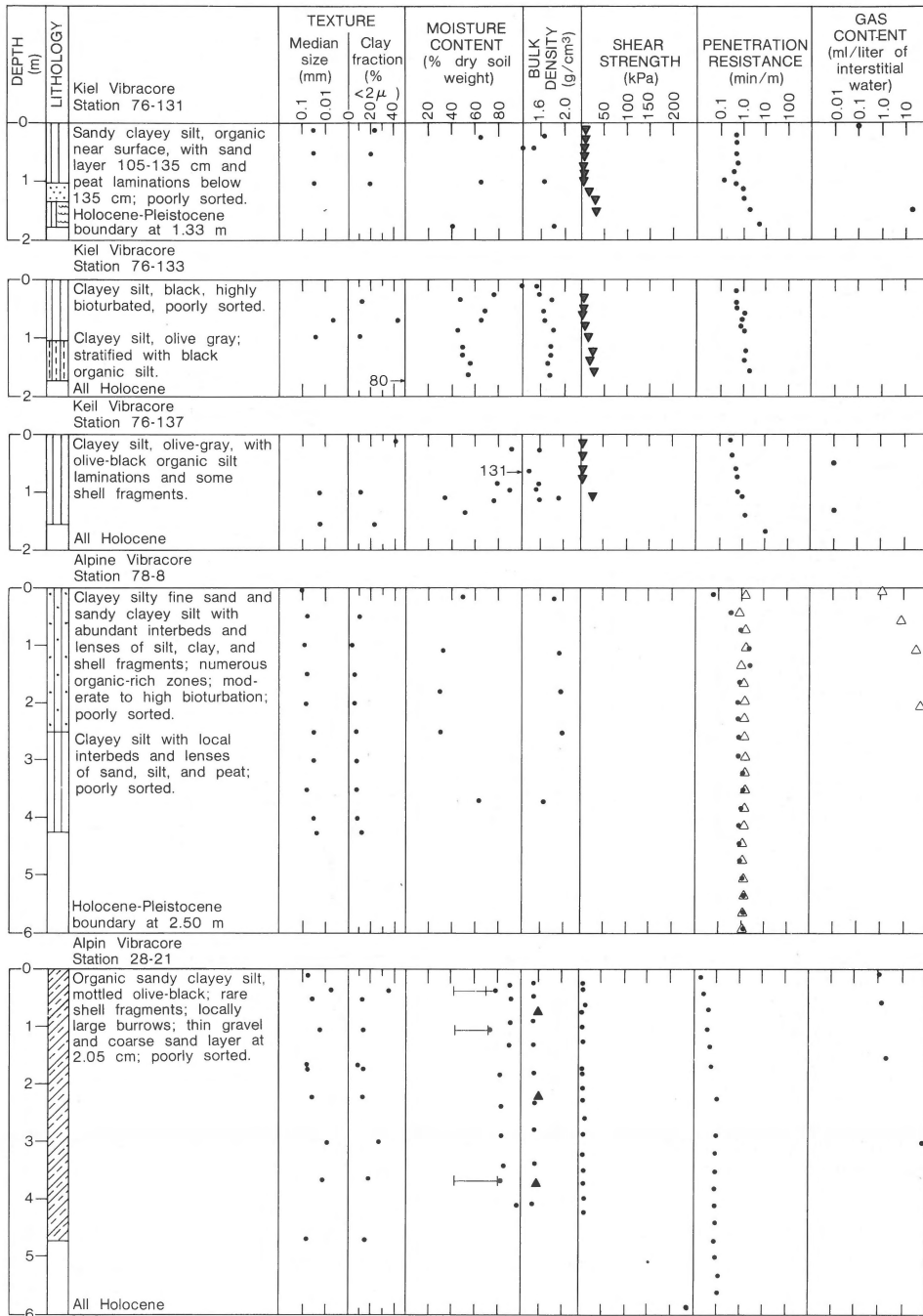
Clarence, the most protected environment in the region. The materials in this profile have substantially higher water contents (90 percent) and lower strength (10 kPa) than other materials encountered in the northeastern Bering Sea. The very low strengths and their uniformity with depth suggest the Holocene materials in Port Clarence may be somewhat underconsolidated; i.e., not yet in equilibrium with the weight of the material.

*Sand wave fields near Port Clarence*

Four profiles in the sand wave fields near Port Clarence in the Chirikov Basin are shown in figure 6. Stations 78-14 and 78-16 are located on one sand wave crest, and the profiles penetrate medium sand that appears to be the basal transgressive

deposit described by NELSON (1982, this volume, figure 6). Station 78-15 is located in the adjacent sand wave trough to the east, and penetrates the Pleistocene peaty mud that underlies the basal transgressive deposits in the region. The profile at station 78-17 is located on the adjacent sand wave-crest to the east. It penetrates the basal transgressive sand to a depth of about 1.5 m and the Pleistocene peaty mud from 1.5 to 2.2 m. The materials from 2.5 to 3.5 m are poorly to moderately sorted medium to fine sand with abundant pebbles and some silt- and clay-sized material. Below a sharp contact at 3.5 m the material appears to be glacial till consisting of a firm muddy sand with scattered pebbles.

The relative density of the basal transgressive sand is low near the surface but increase rapidly with depth, as indicated



See explanation on fig. 2

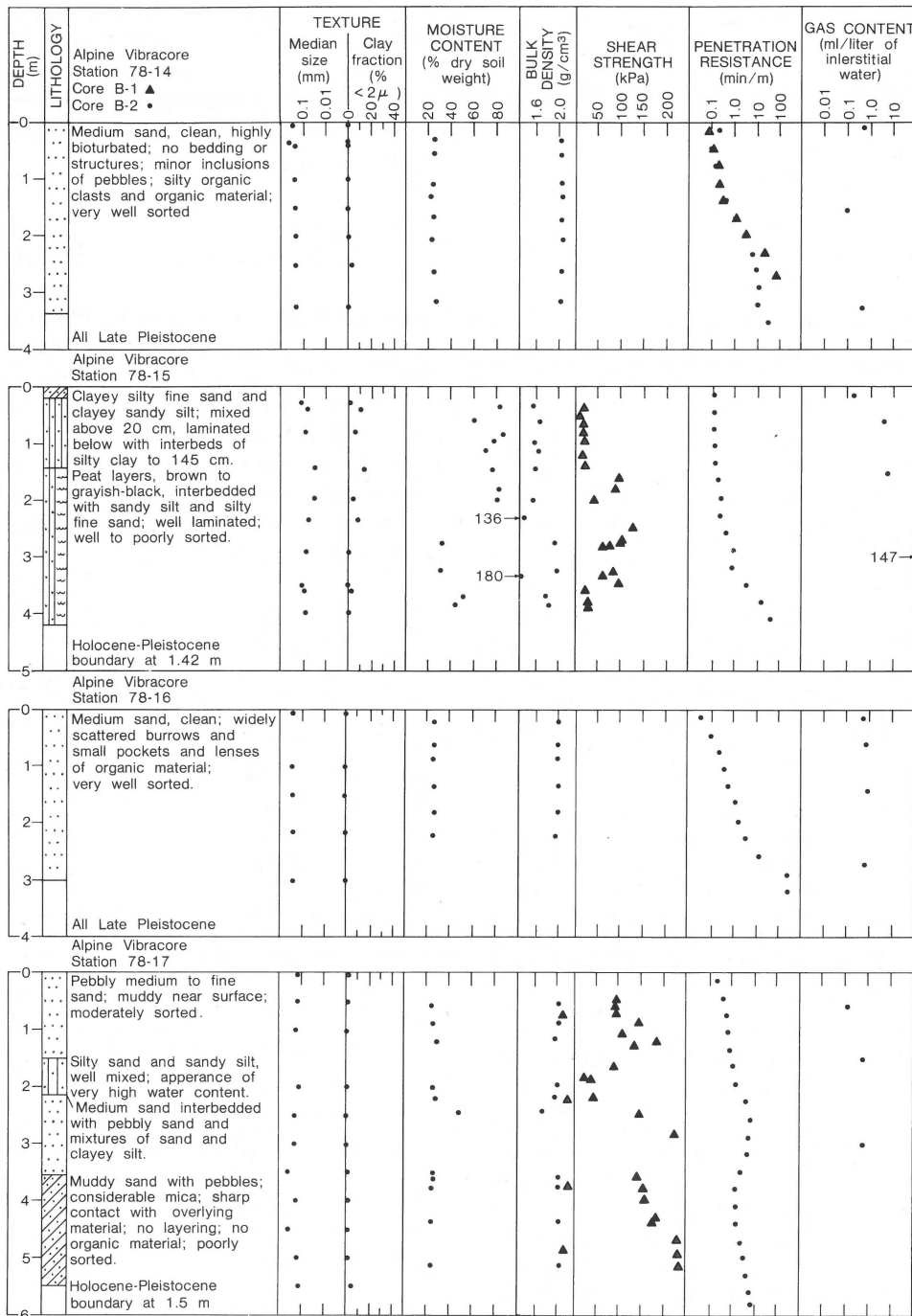
Fig. 5

Geotechnical profiles from eastern Norton Sound, including Stuart Island (78-8), and the Port Clarence embayment (78-21).

by the strength and penetration resistance data in the profiles for stations 78-14 and 78-16. The peaty mud at stations 78-15 and 78-17 is comparatively weak and has a very wide range of water contents due to the intermittent distribution and variable character of the peaty material. At station 78-17 the sand beneath the peaty mud appears to be firm and dense with a moderate to high resistance to vibracore penetration.

### CONSOLIDATION AND STATIC TRIAXIAL DATA

Consolidation data (Fig. 7) on three box core samples of Holocene sediment show a wide range in the initial void ratio compressibility of materials from the Yukon Delta and central regions of Norton Sound (Fig. 1; stations 76-154, 76-156). The wide range in these properties is consistent with the high



See explanation on fig. 2

Fig. 6

Geotechnical profiles from the sand wave fields near Port Clarence in the Chirikov Basin. Station 78-14 and 78-16 are located on one sand wave crest. Station 78-17 is located on the adjacent sand wave crest. Station 78-15 is in the through between these sand wave crests.

variability in the strength and penetration resistance of these materials as shown in figures 2, 3, and 4. The compressibilities of the samples from station 76-156 may be high compared with other materials in these regions, because this station is located near vibracore station 78-24, whose profile (Fig. 2) shows a very loose and weak zone at the surface.

Triaxial data on vibracore samples of Holocene Yukon

sediment from stations 78-22 and 78-23 (Fig. 8) show moderate to high static strength with friction angles in the range of 35° to 40°. The variation in friction angle is small for the samples from station 78-22, consistent with the small variations in texture and density among the samples. The wider variation in friction angle for the samples from station 78-23 appears to be associated with variations in both the

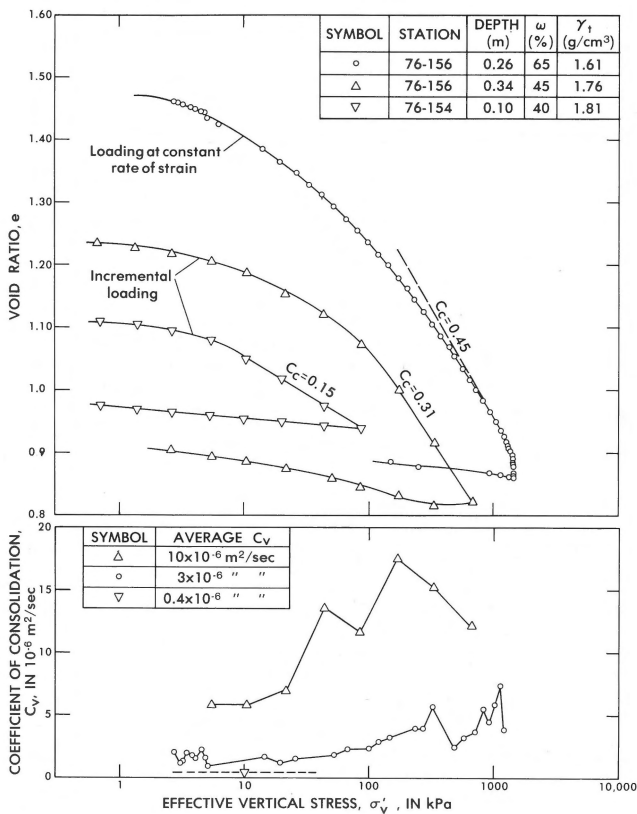


Fig. 7 Consolidation data on samples of Holocene Yukon silt from box cores in the vicinity of the Yukon Delta and central Norton Sound. (See Fig. 1). Box core station 78-156 is adjacent to vibracore station 78-24 whose geotechnical profile is shown in figure 2.  $\omega$  = moisture content in percent dry soil weight;  $\gamma_1$  = bulk density in g/cm<sup>3</sup>;  $C_c$  = compression index. Tests run according to procedures described by the American Society for Testing and Materials (1977) and Wissa et al. (1971).

texture and density of the samples tested.

Soils that tend to contract during shear (contractive) weaken and may liquefy during cyclic loading from earthquakes and ocean waves (SANGREY ET AL., 1978). The stress paths in figure 8 show the materials tested are generally contractive at low deviator stress levels and become dilatative (tend to dilate during shear) as they approach the yield surface. Moreover, with the exception of the sample from 2.34 m depth at station 78-22, the stress paths become less contractive and more dilatative at decreasing initial volumetric stress levels. This behavior pattern is normal for homogeneous material. The in situ stresses at the depths from which the samples were obtained are on the order of 10 kPa to 30 kPa. These stresses are very low compared to the initial volumetric stresses used to obtain the data in figure 8. Therefore, the behavior of the materials in situ should be less contractive and more dilatative than that shown by the stress paths in Fig. 8.

The stress path for the sample from 2.34 m depth at station 78-22 (Fig. 8) is of particular interest in that it shows that this sample is more contractive at low stress levels than any of the samples tested. This behavior is consistent with the data in

figure 2 which shows that this sample represents the loosest zone in the profiles at station 78-22 and 78-23. Thus the data indicate that loose zones within the Holocene Yukon River sediment are of the most concern with regard to strength loss and liquefaction during cyclic loading from earthquakes and ocean waves (CLUKEY ET AL., 1980).

### DISCUSSION OF POTENTIAL HAZARDS

Potential hazards associated with geotechnical characteristics of bottom sediment in the northeastern Bering Sea include the liquefaction of bottom sediments in response to ocean waves, earthquakes, and the upward migration of gas from thermogenic and biogenic sources; the scour and transport of bottom sediments and mobile bed forms in response to bottom currents; low strength and high compressibility of materials that are in low relative density and consolidation states; and gas-charged sediment.

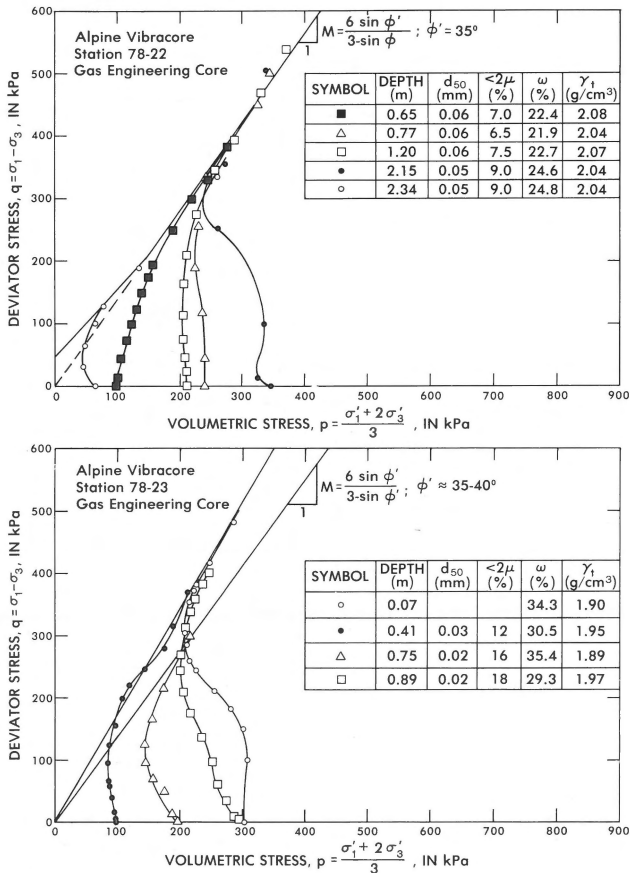


Fig. 8 Consolidated-undrained triaxial data on samples of Holocene Yukon silt from Alpine vibracores at stations 78-22 and 78-23 near the Yukon prodelta (see Fig. 2).  $\phi'$  = effective friction angle.  $\sigma_1$  and  $\sigma_3$  are the total vertical and horizontal stresses, respectively.  $\sigma'_1$  and  $\sigma'_3$  are the effective vertical and horizontal stresses, respectively.  $\omega$  and  $\gamma_1$  are defined in the caption for figure 7.  $d_{50}$  and  $<2\mu$  are the median grain size and minus 2 micron fraction, respectively. Tests run according to procedures described by Bishop and Henkel (1962).

Liquefaction is a particular concern in central and western Norton Sound because the area is exposed to strong cyclic loading from storm waves and is underlain by gas-charged material. Moreover, the susceptibility of the Holocene Yukon River sediment in these regions to liquefaction is suggested by its dominantly silty fine sand and sandy silt texture and by the occurrence of relatively loose zones within it (Figs. 2, 3, and 4). In addition, historic occurrences of wave-induced liquefaction are suggested by evidence of widespread storm-sand layers and scour depressions in the vicinity of the Yukon Delta (NELSON, 1982, this volume; LARSEN ET AL., 1979).

CLUKEY ET AL. (1980) analyzed liquefaction of a semi-infinite half-space model of the Yukon prodelta using dynamic property and permeability data estimated from the geotechnical characteristics reported in this paper together with 3-m and 6-m sinusoidal surface waves. The 3-m wave represents worst-case conditions for a storm recorded in July 1977, and the 6-m wave corresponds to a 1-percent occurrence interval for storms in September and October (BROWER ET AL., 1977). The results indicate that the prodelta will not liquefy in response to the 3-m storm wave even for the extreme case when zero dissipation of pore pressure is assumed. However, the results for the 6-m storm wave, presented in figure 9, indicate that the sediment will liquefy to a depth of approximately 3.5 m. The results in figure 9 further indicate that the depth of liquefaction varies with storm duration but does not increase significantly for durations greater than 1 hour. This relation is suggested by the 4-m pore pressure contour, which is increased at a very slow rate at the end of the 1-hour storm assumed in the analysis.

Materials with low strength and high compressibility are present in eastern Norton Sound and the Port Clarence embayment. Comparison of figure 5 with figures 2, 3, and 4 shows that these materials are substantially finer grained and have lower shear strength than those in central and western Norton Sound. Because eastern Norton Sound and the Port Clarence embayment are protected from strong bottom currents and large waves, deposition has taken place in a low energy environment. Also the materials have not been subjected to cyclic shear stresses associated with large waves, which have probably densified much of the sediment in other parts of the northeastern Bering Sea. The organic sandy clayey silt in the Port Clarence embayment is particularly weak and highly compressible because the very low strengths indicate the material may be somewhat underconsolidated.

Scour and transport of bottom sediment depend on the drag associated with bottom currents and the strength of the bottom sediment. Bottom currents are strong in central and western Norton Sound (Table 1). The bottom sediment is loose and weak at some locations in these regions (Figs. 2, 3, 4) and also in the sand waves near Port Clarence in Chirikov Basin (Fig. 6). In addition, the bottom sediment in central and western Norton Sound appears to be susceptible to liquefaction during major storms. These conditions are consistent with evidence of scour depressions in the vicinity of the Yukon

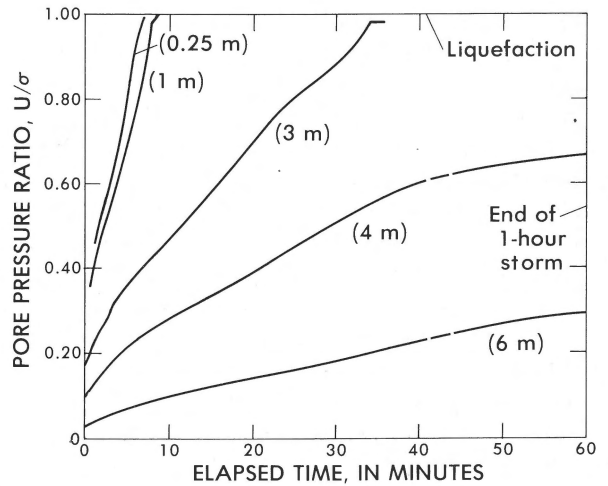


Fig. 9 Results of preliminary analyses of wave-induced liquefaction potential of Holocene Yukon silt near the Yukon prodelta, assuming a wave height of 6 m, a period of 10 seconds, a relative density of 54 percent, and a coefficient of permeability of  $1.50 \times 10^{-6}$  cm/s.  $U/\sigma$  = ratio of pore pressure to total overburden stress. The figure shows the variation of pore pressure ratio with time at depths below the sediment surface ranging from 0.25 m to 6 m.

Delta and also with evidence for the large-scale transport and modification of sand waves near Port Clarence in the Chirikov Basin (NELSON, 1982, this volume; LARSEN ET AL., 1979; 1981).

The importance of gas in sediment depends on whether it is present in the bubble phase and whether the amount present is sufficient to cause significantly elevated pore fluid pressures. Elevated pore pressures can induce liquefaction in overlying materials, and they are associated with reductions in the strength of sediment in situ (SANGREY, 1977).

Seismic and core studies in Norton Sound suggest bubble-phase gas is present in the anomaly associated with the thermogenic gas seep south of Nome and at several other locations where biogenic gas is being generated in the Pleistocene peaty mud beneath the Holocene silt (KVENVOLDEN ET AL., 1979a; HOLMES & THOR, 1982, this volume; KVENVOLDEN ET AL., 1981; NELSON ET AL., 1978; NELSON ET AL., 1979).

Previous work that suggests bubble-phase gas may be causing elevated pore pressures in situ includes: limited data showing an association of low vibracore sample penetration resistance with very high gas contents (NELSON ET AL., 1978); and studies of shallow craters on the bottom of east-central Norton Sound which attribute their origin to episodic venting of biogenic gas formed in the Pleistocene peaty mud and trapped by the overlying Holocene Yukon River sediment (NELSON ET AL., 1979).

The geotechnical profiles in this paper (Figs. 2-6) show additional data concerning the association of vibracore penetration resistance and gas contents. Low penetrations resistance is associated with very high gas contents in some of the profiles (see stations 78-3, 78-4, 78-8, and 78-15), but not in

general as noted in the section on geotechnical profiles above. For example, the penetration resistance at station 78-5 is about the same as that at station 78-3 even though the gas contents in the two profiles differ substantially.

However, the lack of consistent correlations between gas content and penetration resistance in all the profiles does not eliminate the possibility that gas is causing elevated pore pressures in situ. The relative density or consolidation state of the materials also influences the penetration resistance and may be masking the effects of gas. In this regard the association of the shear strength and penetration resistance data in the profiles is of the interest because both measurements are influenced by the relative density or consolidation state, but only the penetration resistance is influenced by in situ elevated pore pressures. The strength data were obtained from samples on shipboard and in the laboratory where elevated pore pressures would have easily dissipated prior to the measurements.

The importance of the relative density or consolidation state of the material on penetration resistance is clearly evident in the geotechnical profiles from eastern Norton Sound and the Port Clarence embayment (Fig. 5). As noted in the discussion above very low strengths occur because these locations are not exposed to significant ice loading and waves that can densify and consolidate sediment. The penetration resistance is correspondingly low, it varies with the shear strength, and it does not appear to be influenced by variations in gas content. Similarly, in the profiles from the Yukon Delta region (Fig. 2), the penetration resistance is more closely associated with relative density, as indicated by the strength data, than with the gas content.

Hence the question remains whether significant elevated pore pressure associated with biogenic and thermogenic gas exists in the bottom sediment of the northeastern Bering Sea. Additional work is needed to determine the magnitudes of in situ pore pressures and their regional distribution.

#### ACKNOWLEDGEMENTS

The cruises for this study were supported by the U.S. Geological Survey and the U.S. Bureau of Land Management through an interagency agreement with the U.S. National Oceanic and Atmospheric Administration, under which a multiyear program responding to the needs of petroleum development of the Alaska continental shelf is managed by the Outer Continental Shelf Environmental Assessment Program (OCSEAP) Office.

#### REFERENCES

- American Society for Testing and Materials 1978 Annual Book of ASTM Standards Part 19 (Philadelphia): 560 pp.
- Bishop, A.W. & D.J. Henkel 1962 The measurements of soil properties in the triaxial test, 2d ed. Arnold (London): 227 pp.
- Brower, W.A. Jr., H.F. Diaz, A.S. Prechtel, H.W. Searby & J.L. Wise 1977 Climatic Atlas of the outer continental shelf waters and coastal regions of Alaska, 2 Bering Sea - Arctic Environmental Information and Data Center, Environmental Data Service, NOAA (Asheville, North Carolina: 443 pp.
- Cacchione, D.A., D.E. Drake & P. Wiberg 1982 Velocity and bottom-stress measurements in the bottom boundary layer, outer Norton Sound, Alaska. In: C.H. Nelson & S.D. Nio (eds.): The northeastern Bering shelf: new perspectives of epicontinental shelf processes and depositional products - Geol. Mijnbouw 61: 071-078.
- Cline, J.D. & M.L. Holmes 1977 Submarine seepage of natural gas in Norton Sound, Alaska Science 198: 1149-1153.
- Clukey, E.C., D.A. Cacchione & C.H. Nelson 1980 Liquefaction of Yukon Prodelta Proc. Offshore Tech. Conf. Paper 3773: 315-320.
- Clukey, E.C., C.H. Nelson & J.E. Newby 1978 Geotechnical properties of northern Bering Sea sediment - U.S. Geol. Surv. Open File Report 78-408: 29 pp.
- Drake, D.E., D.A. Cacchione, R.D. Meunch & C.H. Nelson 1980 Sediment transport in Norton Sound, Alaska - Mar. Geol.: 36: 97-126.
- Dupré, W.R. & R. Thompson 1979 A model for deltaic sedimentation in an ice-dominated environment - Proc. Offshore Tech. Conf. Paper 3434, 2: 657-661.
- Holmes, M.L. & D.R. Thor 1982 Distribution of gas-charged sediment in Norton Basin, northern Bering Sea. In: C.H. Nelson & S.D. Nio (eds.): The northeastern Bering shelf: new perspectives of epicontinental shelf processes and depositional products - Geol. Mijnbouw 61: 79-89.
- Hopkins, D.M. 1975 Time-stratigraphic nomenclature for the Holocene Epoch. - Geology 3: 10.
- Kvenvolden, K.A., C.H. Nelson, D.R. Thor, M.C. Larsen, G.D. Redden, J.B. Rapp & D.J. DesMarais 1979a Biogenic and thermogenic gas in gas-charged sediment of Norton Sound, Alaska - Proc. Offshore Tech. Conf. Pap. 3412, 1: 479-483.
- Kvenvolden, K.A., G.D. Redden, D.R. Thor & C.H. Nelson 1981 Hydrocarbon gases in nearsurface sediment of the northern Bering Sea. In: D.W. Hood & J.A. Calder (eds.) The Eastern Bering Sea Shelf: Oceanography and Resources vol. 1 - U.S. Dept. Comm., NOAA: 411-424.
- Kvenvolden, K.A., K. Weliky, C.H. Nelson & D.J. DesMarais 1979b Submarine seep of carbon dioxide in Norton Sound, Alaska - Science 205: 1264-1266.
- Larsen, M.C., C.H. Nelson & D.R. Thor 1979 Geologic implications and potential hazards of scour depressions on Bering Shelf, Alaska. Environ. Geol. 3: 39-47.
- 1980 Geological, geochemical, and geotechnical observations on the Bering shelf, Alaska - U.S. Geol. Surv. Open File 80-979.
- 1981 Sedimentary processes and potential geologic hazards on the sea floor of the northern Bering Sea. In: D.W. Hood & J.A. Calder (eds.): The Eastern Bering Sea Shelf: Oceanography and Resources, vol. 1 - U.S. Dept. Comm., NOAA: 247-262.
- McDougall, K 1982 Microfaunal analysis of modern and Holocene transgressive deposits of the northeastern Bering Sea. In: C.H. Nelson & S.D. Nio (eds.): The northeastern Bering shelf: new perspectives of epicontinental shelf processes and depositional products - Geol. Mijnbouw 61: 19-27.
- McManus, D.A., D.M. Hopkins & C.H. Nelson 1977 Distribution of bottom sediments on the continental shelf, northern Bering Sea - U.S. Geol. Surv. Prof. Pap. 759-C: 31 pp.
- Nelson, C.H. 1982 Late Pleistocene-Holocene transgressive sedimentation in deltaic and non-deltaic areas of the Bering epicontinental shelf. In: C.H. Nelson & S.D. Nio (eds.): The northeastern Bering shelf: new perspectives of epicontinental shelf

- processes and depositional products – *Geol. Mijnbouw* 61: 5-18.
- Nelson, H. & J.S. Creager 1977 Displacement of Yukon derived sediment from Bering Sea to Chukchi Sea during Holocene time – *Geology* 5: 141-146.
- Nelson, C.H., K.A. Kvenvolden & E.C. Clukey 1978 Thermogenic gases in near-surface sediments of Norton Sound, Alaska – *Proc. 10th Offshore Tech. Conf. Pap.* 3354, 3: 2623-2633.
- Nelson, C.H., D.R. Thor, M.W. Sandstrom & K.A. Kvenvolden 1979 Modern biogenic gas-generated craters (sea floor 'pockmarks') on the Bering Shelf, Alaska – *Geol. Soc. Am. Bull.* 90: 1144-1152.
- Sangrey, D.A. 1977 Marine Geotechnology – State-of-the-Art – *Mar. Geotechnol.* 2: 45-80.
- Sangrey, D.A., A.H. Bouma, M.A. Hampton, P.R. Carlson, B.F. Molnia, E.C. Clukey, C.H. Nelson & H.W. Olsen 1979 Geotechnical engineering characteristics of the outer continental shelf lease areas in Alaska – *Proc. 5th Intern. Conf. on Port and Ocean Engineering Under Arctic Conditions*, August 13-18, 1979 2: 963-976.
- Sangrey, D.A., G. Castro, S.J. Poulos & J.W. France 1978 Cyclic loading of sands, silts, and clays – *Proc. ASCE Geotech. Engin. Div. Spec. Conf. on Earthquake Engineering and Soil Dynamics II*: 836-851.
- Thor, D.R. & C.H. Nelson 1979 A summary of interacting surficial geologic processes and potential geologic hazards in the Norton Basin, northern Bering Sea – *Proc. Offshore Tech. Conf. Pap.* 3400: 377-381.
- Thor, D.R., C.H. Nelson & R.O. Williams 1981 Ice gouging on the subarctic Bering Shelf. In: D.W. Hood & J.A. Calder (eds.): *The Eastern Bering Sea Shelf: Oceanography and Resources*, vol. 1 U.S. Dept. Comm., NOAA: 279-292.
- Wissa, A.E.Z., J.T. Christian, E.H. Davis & S. Heiberg 1971 Consolidation at constant rate of strain – *Am. Soc. Civ. Engin. J. Soil Mech. Found. Engin.* 97, SM 10: 1393-1412.